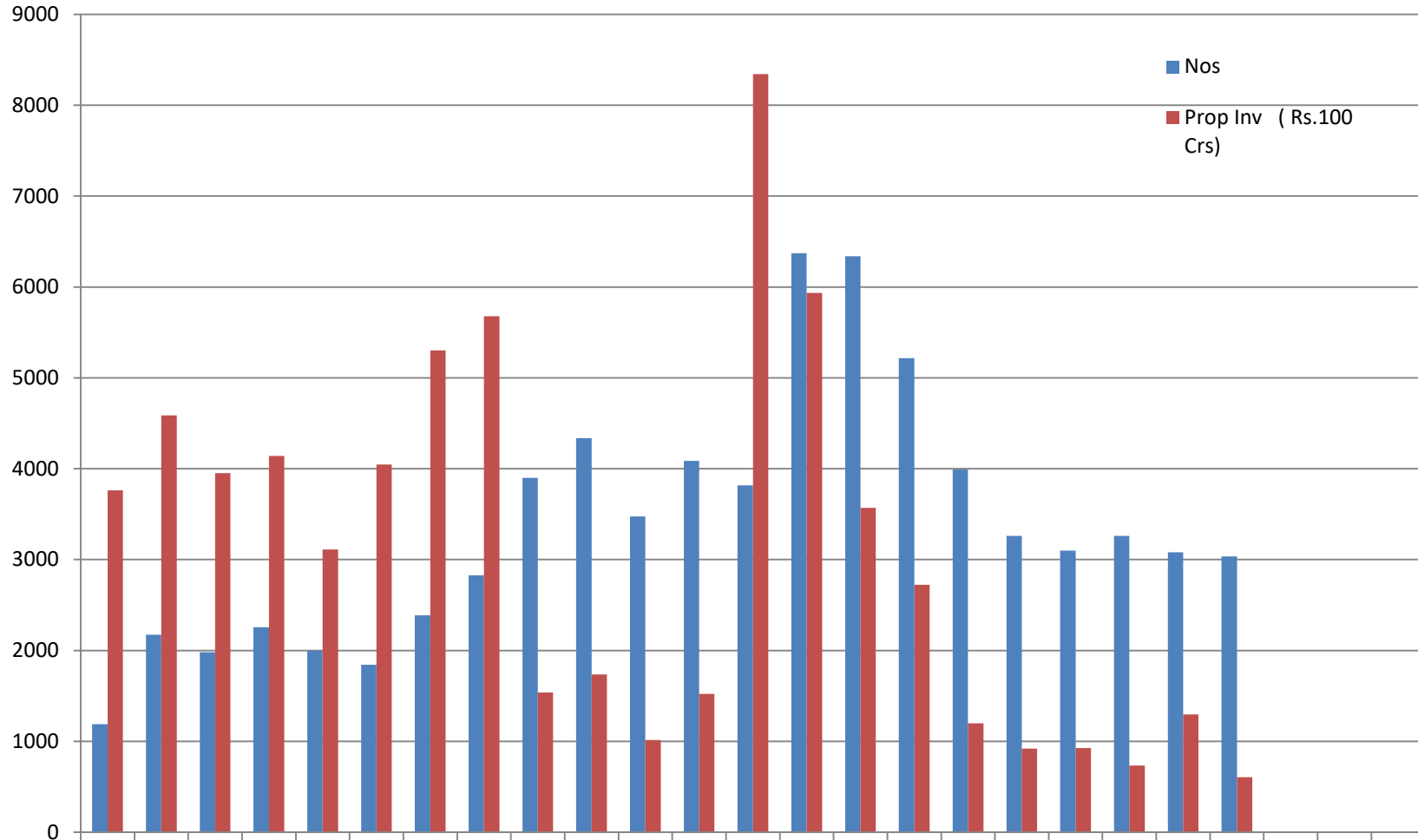
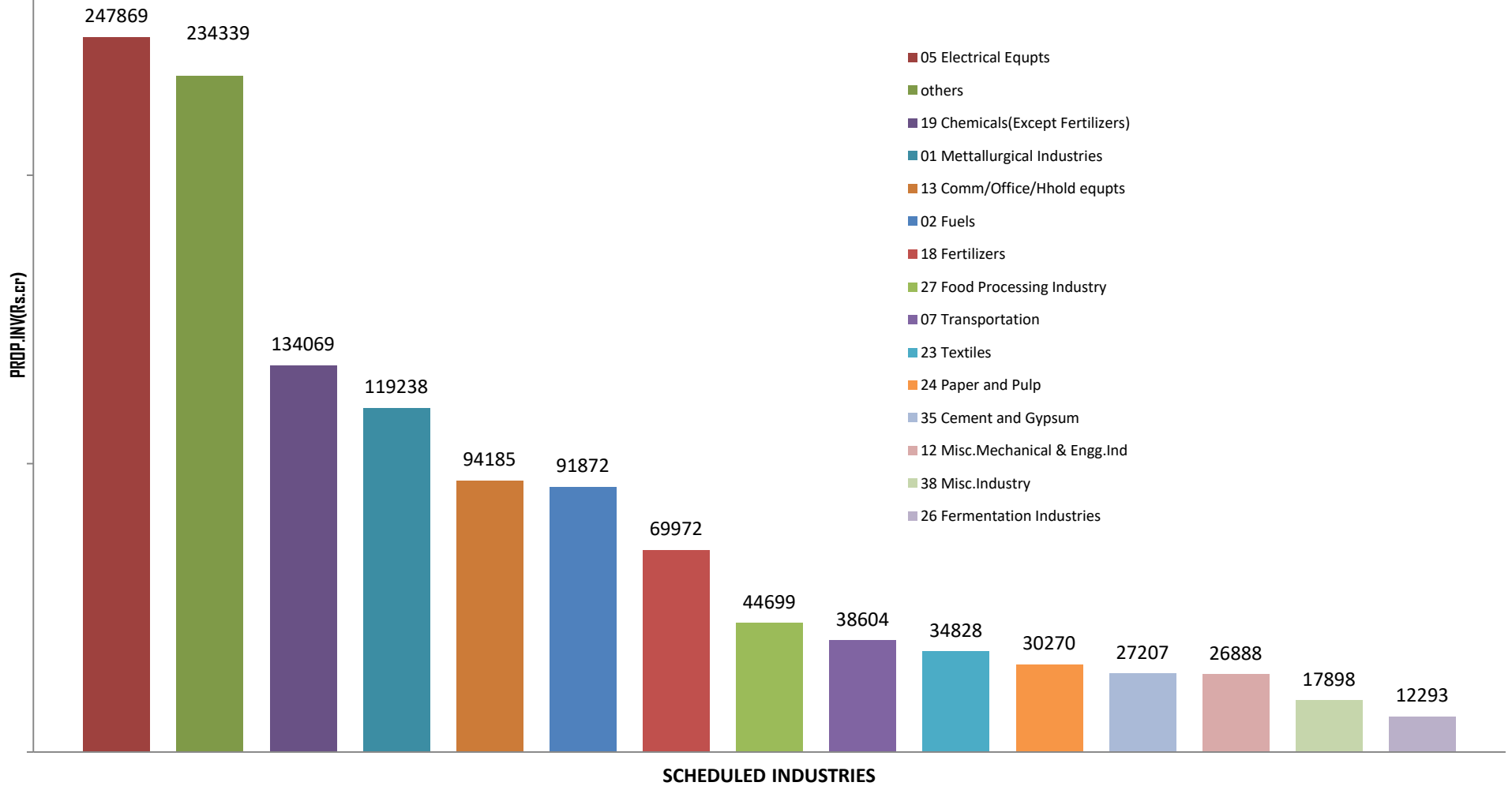


## YEARWISE INVESTMENT INTENTIONS UPTO October 2020



	2020	2019	18	17	16	15	14	13	12	11	10	9	8	7	6	5	4	3	2	1	2000	99	98		
Nos	1188	2173	1982	2256	1998	1843	2387	2828	3900	4336	3475	4085	3818	6371	6338	5218	3991	3261	3098	3261	3080	3034			
Prop Inv (Rs.100 Crs)	3763	4586	3952	4141	3110	4047	5301	5679	1539	1736	1014	1523	8342	5934	3569	2723	1200	919	926	734	1297	607			

## PROPOSED INVESTMENT (SCHEDULED INDUSTRY) Since January 2018 to October 2020



## STATEWISE IEMs IMPLEMENTED FROM JANUARY 2018 TO October 2020 (ON THE BASIS OF PART B FILED FOR IEMs FILED SINCE 1991)

