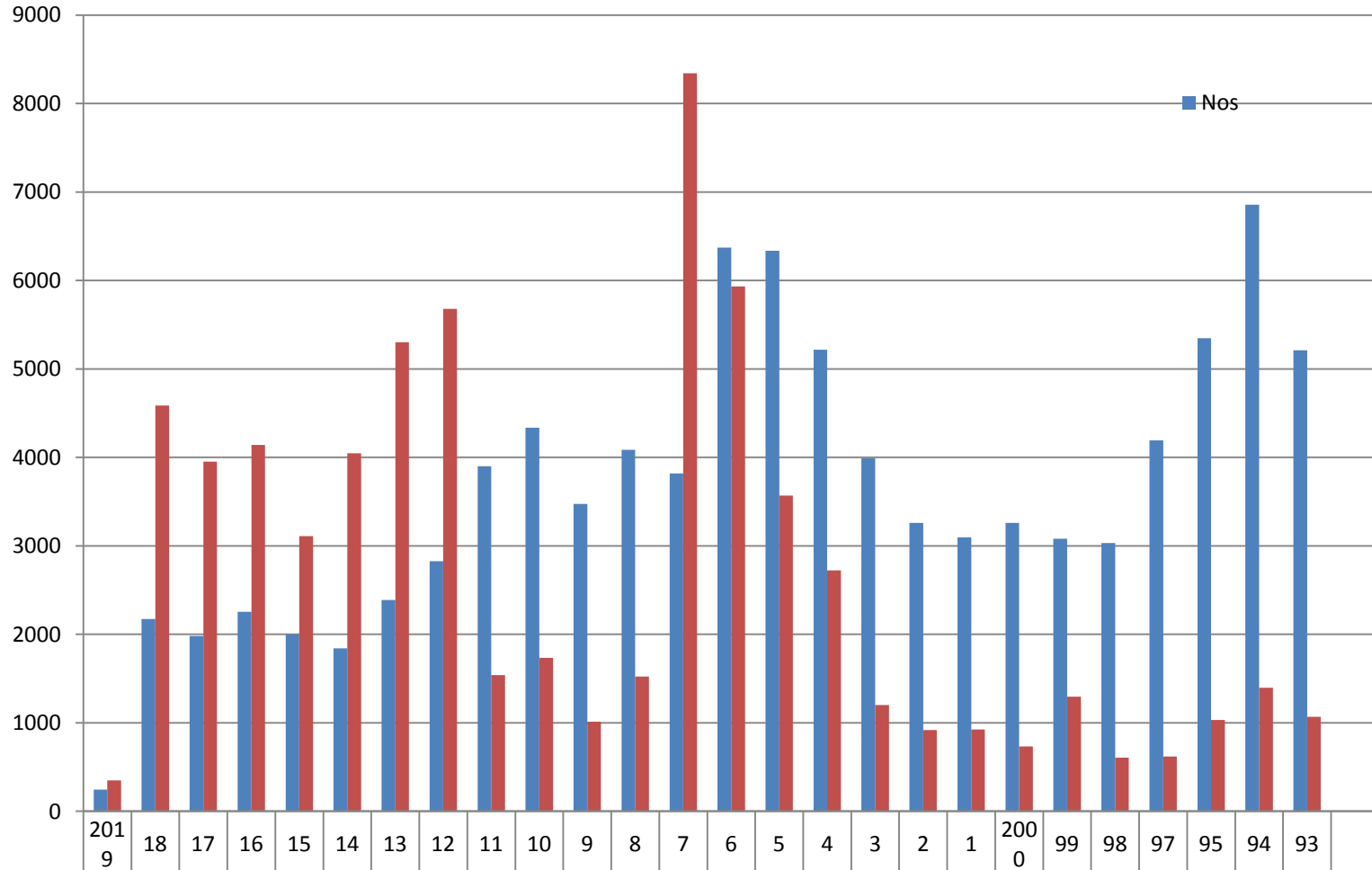


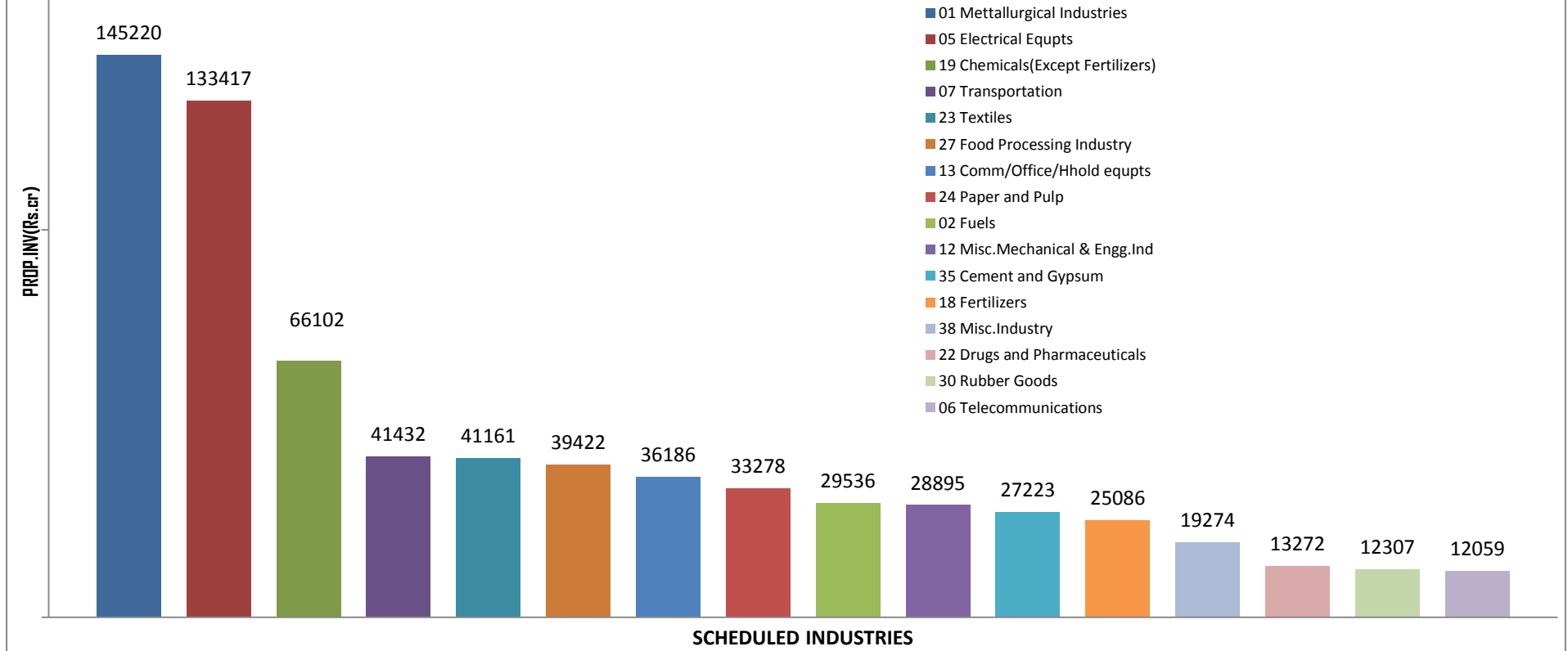
YEARWISE INVESTMENT INTENTIONS UPTO February 2019



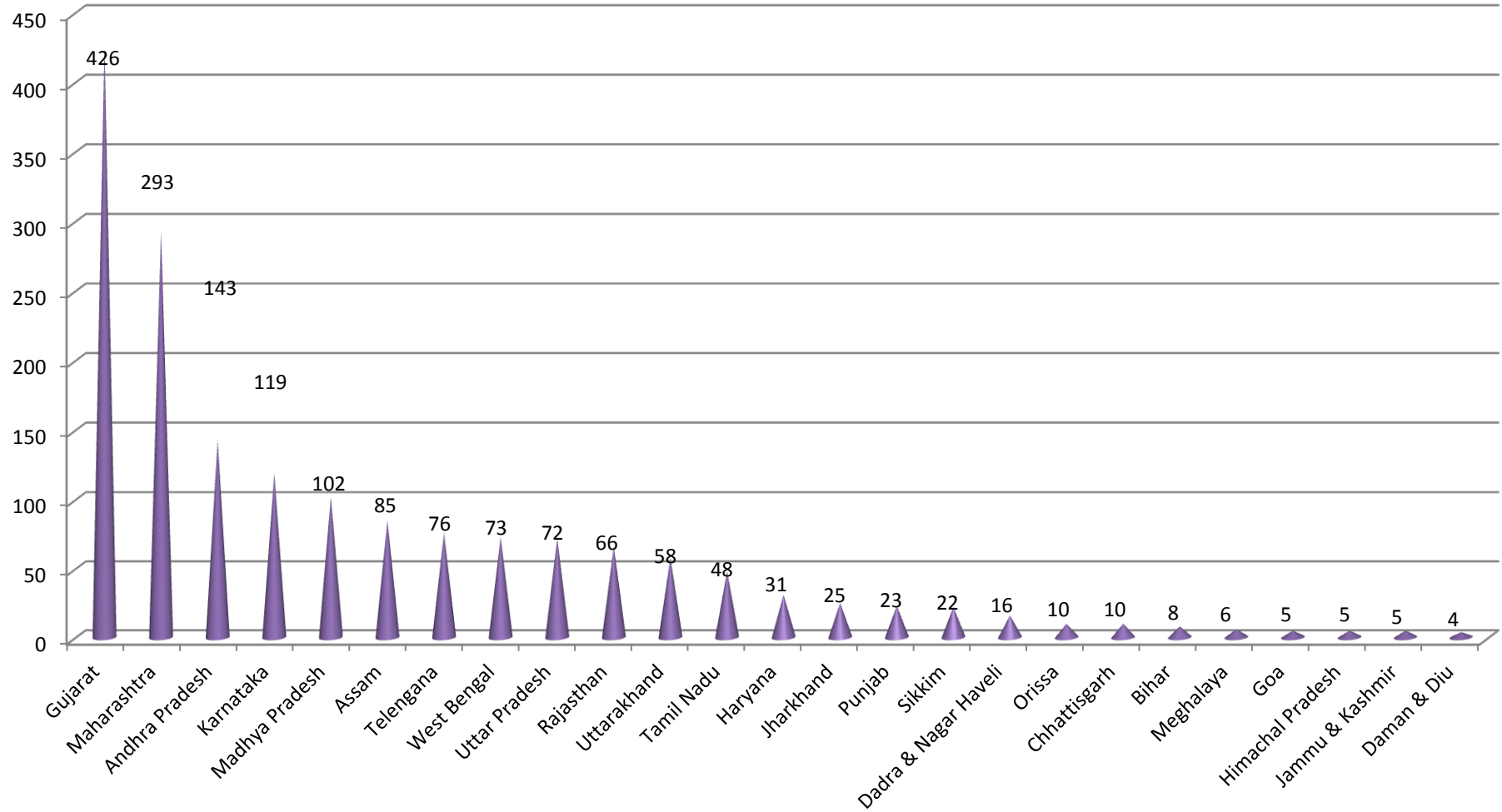
Nos	247	2173	1982	2256	1998	1843	2387	2828	3900	4336	3475	4085	5381	8637	1633	8521	8399	1326	1309	8326	1308	0303	4419	4534	7685	7521	0
Prop Inv (Rs.100 Crs)	351	4586	3952	4141	3110	4047	5301	5679	1539	1736	1014	1523	8342	5934	3569	2723	1200	919	926	734	1297	607	619	1032	1398	1067	0

PROPOSED INVESTMENT (SCHEDULED INDUSTRYWISE)

Since January 2017 to February 2019



**STATEWISE IEMs IMPLEMENTED FROM JANUARY 2017 TO February 2019
(ON THE BASIS OF PART B FILED FOR IEMs FILED SINCE 1991)**



Statewise Investment intentions from January 2017 to February 2019

